

Welcome to SonarPhone

What is SonarPhone?

As the name implies, SonarPhone turns your smartphone or tablet into a fully functional touch screen sonar system that will rival the performance of sonar systems costing hundreds more. You don't need cell phone coverage to use it.

The SonarPhone Sonar Transmitter will work anywhere in the world. The SonarPhone transmitter creates its own WiFi hotspot and you can share its signal with as many people as you wish or password protect it just for yourself.

The use of the SonarPhone App beyond DEMO mode requires a WiFi connection to a SonarPhone SP100 or SP200/SP300 Sonar System. You can either share an existing signal or purchase a Sonar System for yourself.

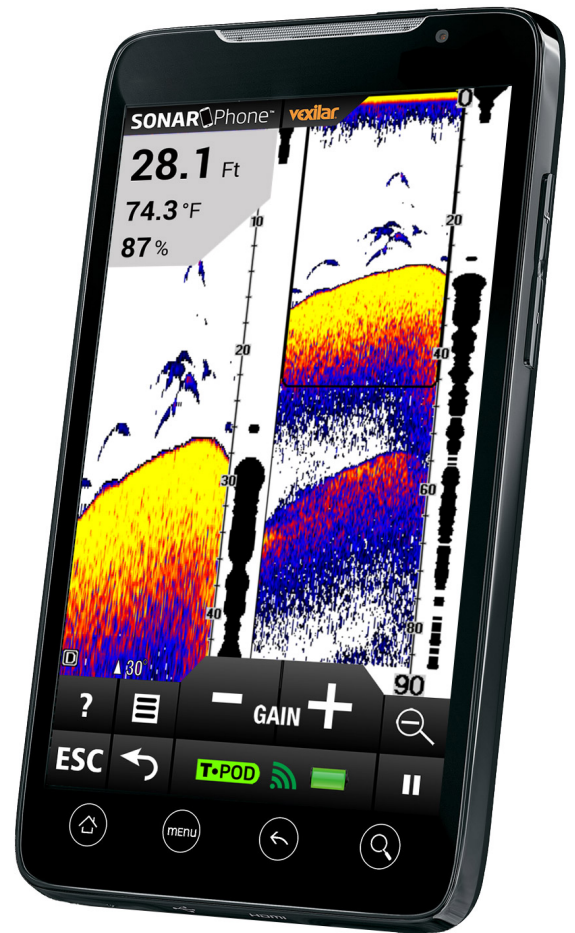
SonarPhone Overview




This Depth Sounder Mobile Application is designed for amateur and professional fishermen alike. It will allow you see fish, depth and bottom contour of a body of water. This high performance sonar system, when coupled with a SP100 or SP200/SP300, will rival the performance of many high-cost stand-alone sonar systems.

Sonar technology is based on sound waves which are transmitted into the water. The system uses sonar to locate and define structure, bottom contour and composition, as well as depth directly below the transducer.

When in the water, the transducer (SP100 or SP200/SP300) sends a sound wave signal downward and determines distance by measuring the time between the transmission of the sound wave and when the sound wave is bounced off an object. Then it uses the reflected signal to interpret depth and composition of an object or bottom structure.

Choose the System That Works Best for You



Model	SP100	SP200	SP300
	T•POD Wi-Fi Transducer Pod	T•BOX Wi-Fi Boat Sonar	
			
Usage	Impact resistant chassis. Cast it or troll it.	Permanent boat installation	Portable boat installation w/ suction cup transducer bracket
Transducer	Water activated transmitter	High-speed skimmer-style transducer with 20 feet of cable	
Max depth range	120 feet	240 feet	
Sonar frequency	125 kHz Single Beam 30°	200/83 kHz Dual Beam 20°/40°	
Power source	3.7V rechargeable battery runs for four continuous hours on one charge. USB port charging system.	12V DC power	Rigid carry case holds 12V, 4.5 amp-hour battery. Charger also included.
Power output	400 watts peak-to-peak	800 watts peak-to-peak	
Transmit speed	100 Mbps	100 Mbps	
Screen controls	Touch screen controls	Touch screen, split screen display with touch screen zoom control	

(See Section: [Where to Buy](#))

Features & Specifications

SonarPhone Features

- Compatible with Apple and Android Smartphones and Tablets
- Digital Depth Indicator
- Water Temperature
- Automatic Ranging
- Fish Icon
- Depth and Fish Alarm
- Zoom Bottom Track
- Keel Offset Setting
- Noise Rejection
- Surface Clarity
- Battery Indicator
- WiFi Wireless Link

IMPORTANT: Your mobile device must have a display resolution of at least 320 x 320 pixels in order for the SonarPhone app to function properly.

SP100 Specifications

- Depth Range Max: 120 feet (40M)
- Depth Range Min: 2 feet (0.6M)
- Sonar Frequency: 125 kHz Single Beam
- Cone Angle: 30 Degrees
- Sonar Power: 3.7V Rechargeable Battery
- Audible Alarms: Fish, Shallow, Low Battery
- Operational: -20 — +80°C
- Wireless distance: 100 Yards (90M)

SP200/SP300 Specifications

- Depth Range Max: 240 feet (73M)
- Depth Range Min: 2 feet (0.6M)
- Sonar Frequency: 200/83KHz Dual Beam
- Cone Angles: Dual Beam 20 or 40 Degree
- Sonar Power: 12V DC - 2.5mA Draw
- Audible Alarms: Fish, Shallow, Low Battery
- Operational: -20 — +80°C
- Wireless distance: 100 Yards (90M)

How to Connect to a SP100 or SP200/SP300

iOS Devices

1. Start the SonarPhone by powering up the SP200/SP300 or placing the SP100 into the water. (Use a wet paper towel to power up the SP100 if at home)
2. Go to your iPhone or iPad's main "Settings" page .
3. Go to "WiFi". Your iPhone will search for new signals and should find the SP100 or SP200/SP300 signal.
4. Select the SP100 or SP200/SP300 that appears
5. If a master password is set for the SP100 or SP200/SP300, you will need to enter this password to access the signal. Tap "Join" to connect.
6. Press your iPhone's home button, then located and tap the SonarPhone icon to start the app.
7. (Optional) Tap "System Setup" to change the default SonarPhone username and password. Note that if you change the default, you will need to exit SonarPhone, return to step 2 and then re-select the SP100 or SP200/SP300.
8. (First Run Only) Tap "Master" and **enter the default password (12345678)** or the new password you set up in the last step.

Setup is Complete. Tap "Connect Now" to begin using SonarPhone.

Android Devices

1. Start the SP-100 or SP-200/SP-300 by powering up the SP200/SP300 or placing the SP100 into the water. (Use a wet paper towel to power up the SP100 if at home)
2. Go to "WiFi" setting and be sure it is "ON". Your SonarPhone system is transmitting and WiFi signal and you should see it on your WiFi networks listing.
3. Select the WiFi SonarPhone source you wish to use, at this point if several other SonarPhone's are being used nearby, you will see them as well, but as you will soon find, they are protected by a security code the primary operator of the system. Ask them for the Security code so they can share their signal with you. If you are using the system by yourself **the WPA security code from the factory is 12345678**.
4. DO NOT leave the WiFi settings screen until you see you are connected to the WiFi channel you have selected.
5. Now that your WiFi is connected you can open the SonarPhone app.
6. Tap the "CONNECT NOW" button and it will ask that you need to establish a MASTER to control your SonarPhone. If you do not have a Master controlling the SonarPhone, it will not allow you to connect.
7. When you Select Master, it will ask for password and it again is 12345678 then hit enter.
8. Once WPA password is accepted you can leave your settings and enter the SonarPhone App and hit the large "Connect Now" button. If this device has not been used before with SonarPhone it will ask for the Master password. Which is the same factory default password: 12345678
Note, once this set-up procedure is done for your specific device, it will not ask you again to be the MASTER you are the MASTER by Default.
9. Remember, your SonarPhone factory default is set to run in the "demo" mode, so you will need to go to the menu key and turn off the demo to start seeing the actual sonar signal from the SonarPhone transmitter.

IMPORTANT: WiFi signal range can be effected by many external factors. While good conditions allow for a 300 foot (90 meters) range, the actual distance you could experience may be plus or minus 20% of this distance. WiFi technology is greatly limited indoors and is best to keep in line of site for best performance. If mounting SP200/SP300, be sure to place it as high in the boat as possible and never in a metal lined compartment which will really shorten your transmit range.

Samsung Owners need to know "WiFi with internet connection" must be turned off in your advanced WiFi settings to receive the WiFi only signal from Sonarphone. If testing at home be sure you are no longer connected to home WiFi as some devices will default back to your home WiFi settings and not allow you to connect to SonarPhone.

Sharing a SP100 or SP200/SP300 WiFi Signal

SonarPhone Master

The owner of the SP100 or SP200/SP300 is called the Master. Only the Master can control the SP100 or SP200/SP300. The letter M will appear on the touch control panel when you are the Master.

SonarPhone Slave

Friends who connect and share your SonarPhone signal are called SLAVES. They can use and watch the SonarPhone display, but will have limited control. The letter S will appear on the touch control panel when you are the Slave.

Note a SLAVE setting will not be possible unless a MASTER is actually running.

Sharing a SonarPhone signal with Friends is EASY! Just ask the owner of the SonarPhone for their WPA password, so you can become a "SLAVE" to the owner or Master controller of the SonarPhone.

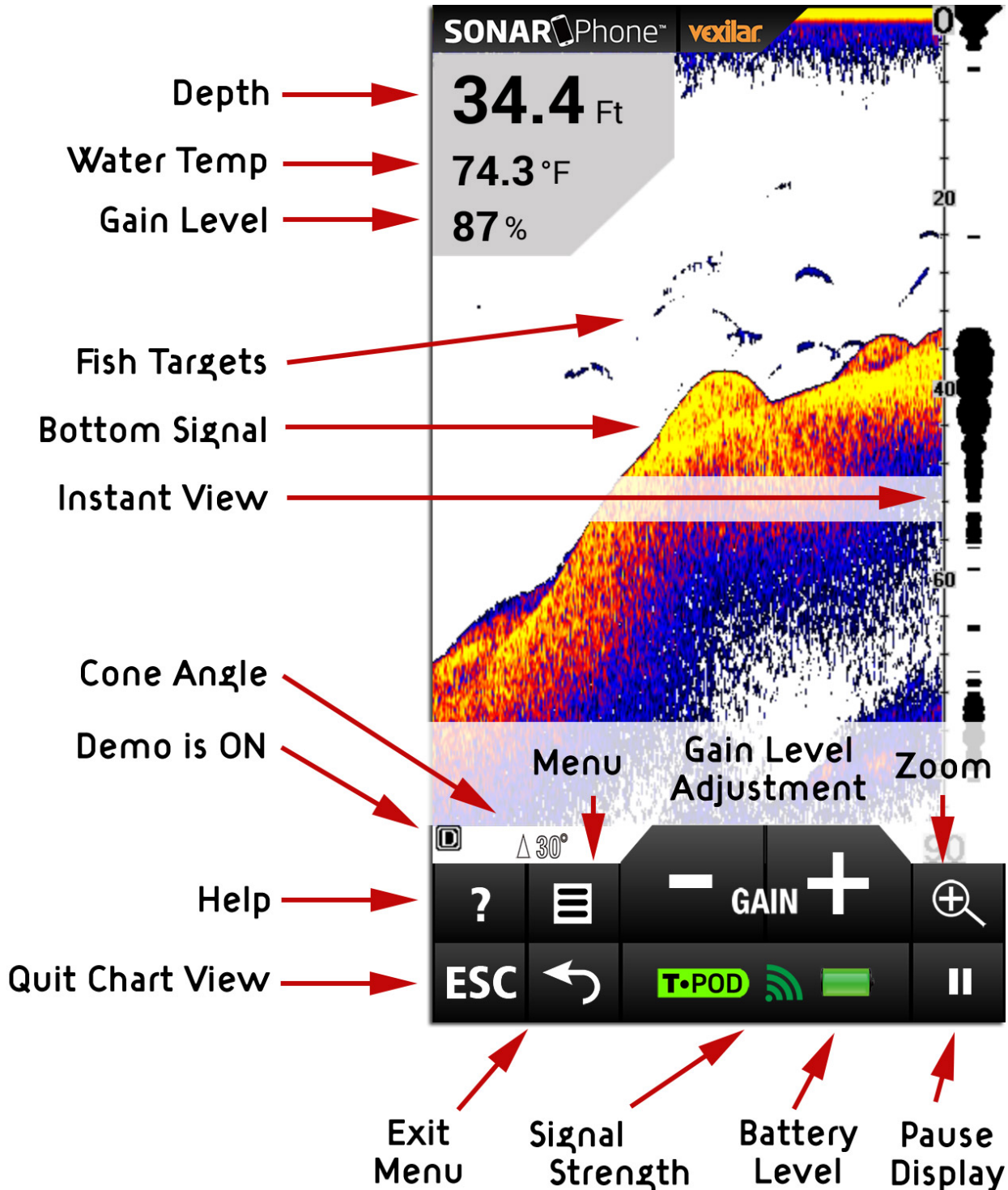
Again you start in the "Settings" of you phone or tablet. Select WiFi and see what WiFi channels are available. Highlight the SonarPhone channel you wish to watch and select it and then add the WPA password from the

Master and when it has been accepted and when you see you are connected to the WiFi channel you simply exit the "SETTINGS" and enter SonarPhone. Hit connect now and you are good to go!

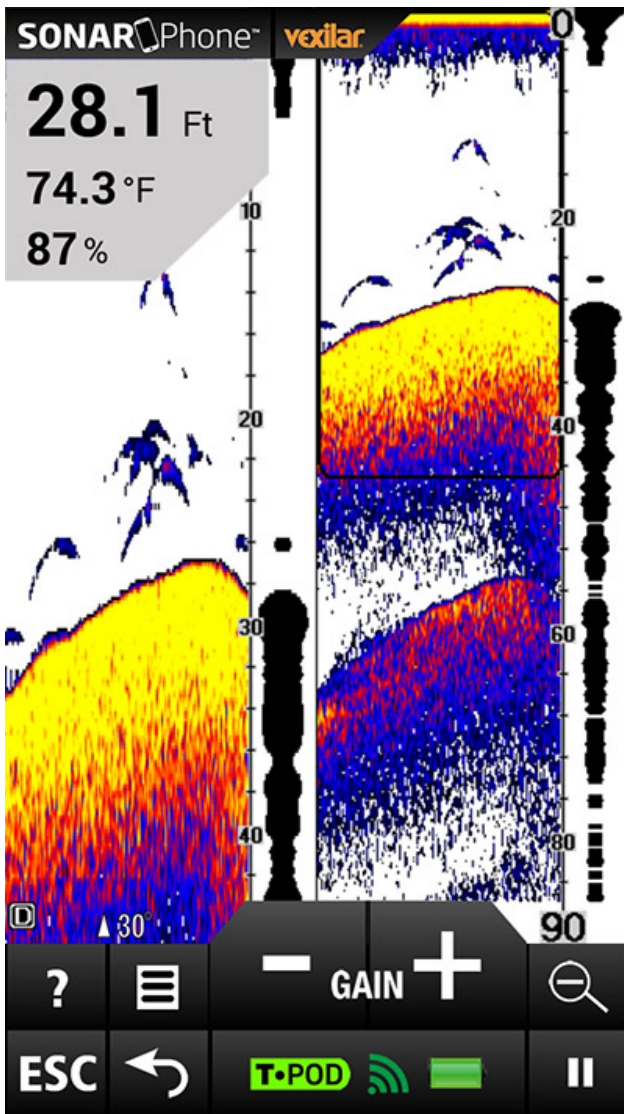
Please realize only the Master controller has complete control of all menu functions, so you will notice some menu features simply will not function while you are a "SLAVE" to the Master of the SonarPhone signal . There is no limit to the number of "Slaves" you can have to a Master SonarPhone signal, but without a master using the system, no slave function is available.

SonarPhone Operation

Touch Pad Functions



Note - The Instant View window always updates at the fastest rate possible. This view shows what is beneath, right now.

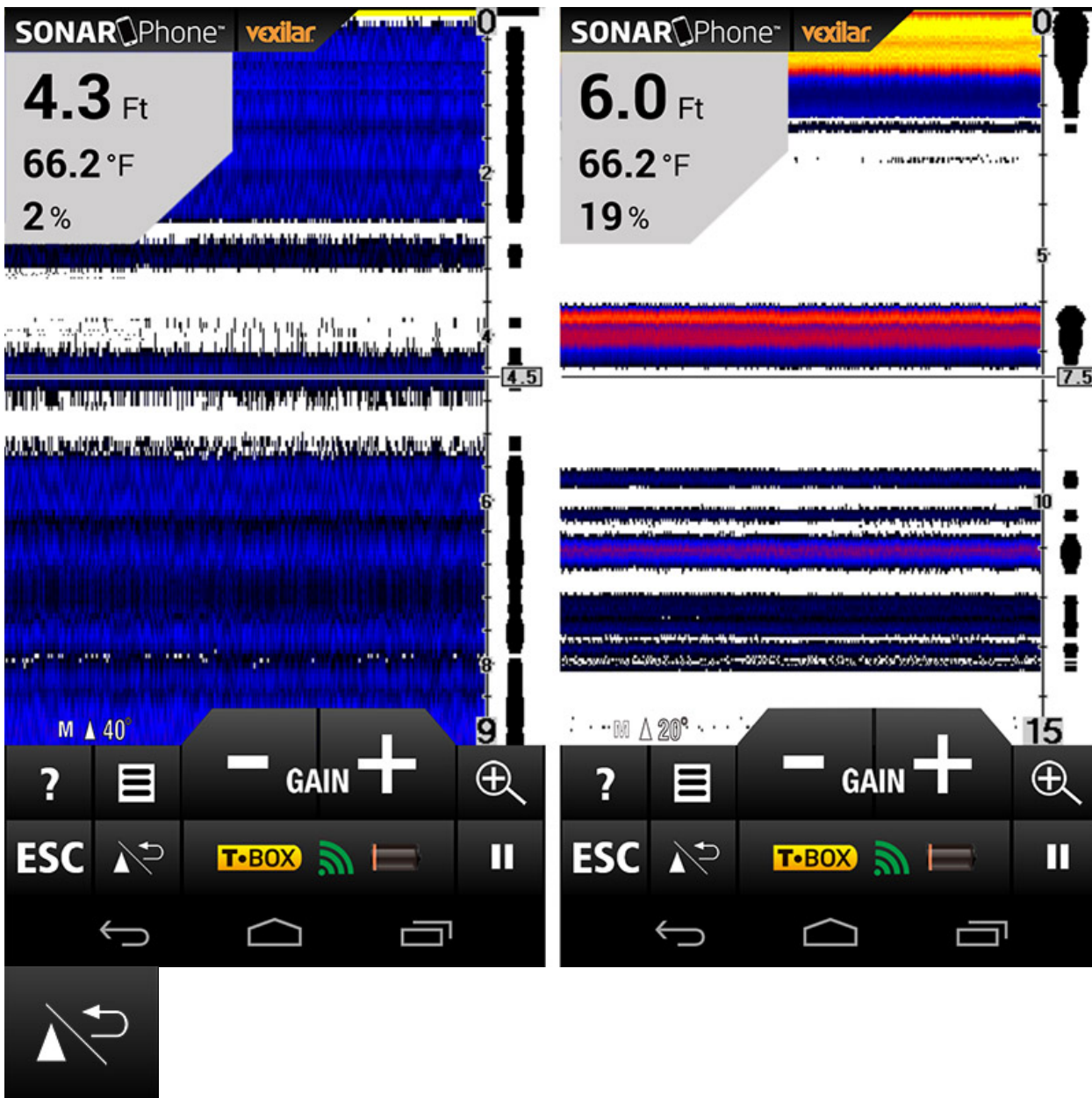


Split Screen Zoom View

Press the Zoom key or use the Zoom Gesture to manually enlarge the bottom signal in the main screen by 2. Press it again and the screen will be returned normal operation.

In the Split Screen Zoom View, the display is split to show the full range view on the right and the zoomed view on the left. The full range view on the right also contains the Zoom Preview Box that shows what part of the full range view is shown in zoom view on the left; the Zoom Preview Box tracks the bottom in the full range view.

Beam Angle Selection (SP200/SP300 Only)



Press the "Beam Angle Select / Return" button on the SP200/SP300 touch pad. During normal operation, this button switches back-and-forth between the the wide 40 degree cone and the narrow 20 degree cone.

IMPORTANT: You will need to increase the gain level while using the wide 40 degree much more than when using the narrow 20 degree beam. This is normal because you are covering twice as much area with the wider beam.

Accessing Menu Features

Press the Menu Key to access the menu system. The menu system immediately appears on the display. The menu system has 3 tabs: "Sonar", "Setup" and "Advanced". Tap the different Tab names to switch between different menu panels.

To change a menu setting, simply swipe that setting to the left or right.

Tap anywhere outside the menu or on the View/Esc Key to return to close menu system.

Sonar Menu

Sonar

Setup

Advanced

Demo Mode

ON

Gain

87%

Auto Depth Range

ON

Depth Range

0-9Ft

Upper Limit

0

Lower Limit

0

Depth Cursor

OFF

Demo Mode

The Demo Mode is a very powerful tool that simulates the fish situation on the water. Use the Demo Mode to learn how to use your SonarPhone before go out on the water. All features except Depth Range may be adjusted.

Gain Control

Gain controls the unit's ability to pick up echoes, from 1% to 100%. Current gain levels are displayed below the digital depth readout as a percentage of maximum (%). If you want to see more detail, increase the gain a little at a time. If there is too much clutter on the screen, decrease the gain to reduce this. Ideally, you want to set the gain to show the strongest fish echoes with the least amount of clutter. As you change the gain level setting, you can see the difference it makes on the chart as it scrolls.

When not in the Menu mode, use the large Left and Right arrows on the touch pad to easily control the gain. If SonarPhone cannot find the depth or the return signal seems weak on the display, increase the gain level until the reading is strong.

Usually, a gain level between 30% and 60% will suffice, but increasing the gain may be required for deeper waters or very soft bottoms. For extreme shallow water, less than 3 feet, reduce the gain near the minimum

setting.

SP200/SP300 ONLY: When using the Wide 40 degree angle, you will need turn up the gain higher than when using the 20 degree angle. This is normal, as the cone of sound is covering twice the area.

Auto Depth Range

This setting allows SonarPhone to control the depth range setting for you. It will do it's best to keep the bottom in view at all times, switching depth ranges as needed. Change this setting to OFF and you can control the range setting manually.

IMPORTANT: While using manual range operation, if the depth is greater than the depth range setting, the bottom will not be visible on screen. Change the range to a deeper setting or select "Auto" to return to automatic operation.

Depth Range

This setting allows you to manually change the range setting, meaning how deep SonarPhone will read depth. The ranges available are: 0—9 feet, then 10 foot increments deeper to 120 feet (0—3 meters to 0—36 meters)

Upper Limit

The Upper Limit is the shallowest point in the water column which will be displayed on the chart.

Lower Limit

The Lower Limit is the deepest point in the water column which will be displayed on the chart.

Changing the upper and lower limits give you far greater control over the depth range. This feature lets you "zoom in" the display in almost unlimited combinations.

Depth Cursor

The depth cursor, found by swiping down to the first menu page, consists of a horizontal line with a digital depth box on the right side. The numbers inside the box show the depth of the cursor. You can move the cursor to any location on the screen, letting you pinpoint the depth of a target or keep a reference point for a specific depth.

Setup Menu

Sonar

Setup

Advanced

Units

Ft/°F

Chart Speed

50%

Fish Symbols / Depth

Off/Off

Fish Alarm

Off

Depth Alarm

Off

Battery Alarm

OFF

Transparency

0%

Units of Measure

- Menu Settings: ft/°C, ft/°F, m/°C or m/°F

This setting allows you to configure the units of measure for your needs.

Chart Speed

- Settings: 10% to 100%

This setting changes the speed at which the display scrolls across the screen. Faster chart speeds will show longer straighter lines as fish and bottom. Slower chart speeds will show shorter, more curved lines.

Fish Symbols & Depth

Menu Settings

- On/On: Symbols and Depth are Displayed
- On/Off: Fish Symbols Only are Displayed
- Off/Off: No Fish Symbol Display

This feature identifies targets that meet certain standards for possibly being a fish. SonarPhone analyzes all echoes and eliminates surface clutter, thermoclines, and other undesirable signals. In most instances, remaining targets are fish. This feature displays fish symbols on the screen in place of the actual fish echoes. There are three fish symbol sizes used to designate the relative size between targets.

SP200/SP300 ONLY: Fish symbols in the 40 degree cone will appear gray. Fish symbols in both the 40 and 20 degree cones will be black.

IMPORTANT: SonarPhone is sophisticated, but it can be fooled. It may not always be able to distinguish between fish and other larger suspended objects in the water.

Fish Alarm

The Fish Alarm can be configured to sound for different sizes of fish. Select the setting that is best for you.

Off - No alarm

LARGE - Alarm for Big Targets Only

LARGE/MEDIUM - Alarm for Big and Medium Target

LARGE/MEDIUM/SMALL - Alarm for Any Size Target

Depth Alarm

- Menu Settings: Off
- Adjustment: 1 foot to 99 feet (1 to 30 meters)

The Depth Alarms sounds a tone and the Depth Alarm Indicator will blink when the bottom depth gets shallower than the Depth Alarm's setting.

WARNING: Do not use this feature for shallow water navigation.

Battery Alarm

When the battery voltage drops below the set value, the alarm sounds. This ensures you can tell your friends about the big fish you caught with the help of SonarPhone on Facebook before the battery goes dead.

Transparency

This feature sets the transparency of the depth, temp and gain percentage readout background located at the upper left of the display.

Advanced Menu

Sonar

Setup

Advanced

Bottom Lock

OFF

Keel Offset

OFF

Display Color Options

White

Surface Clarity

Off

Noise Filter

Off

Language

English

S/N

Bottom Lock

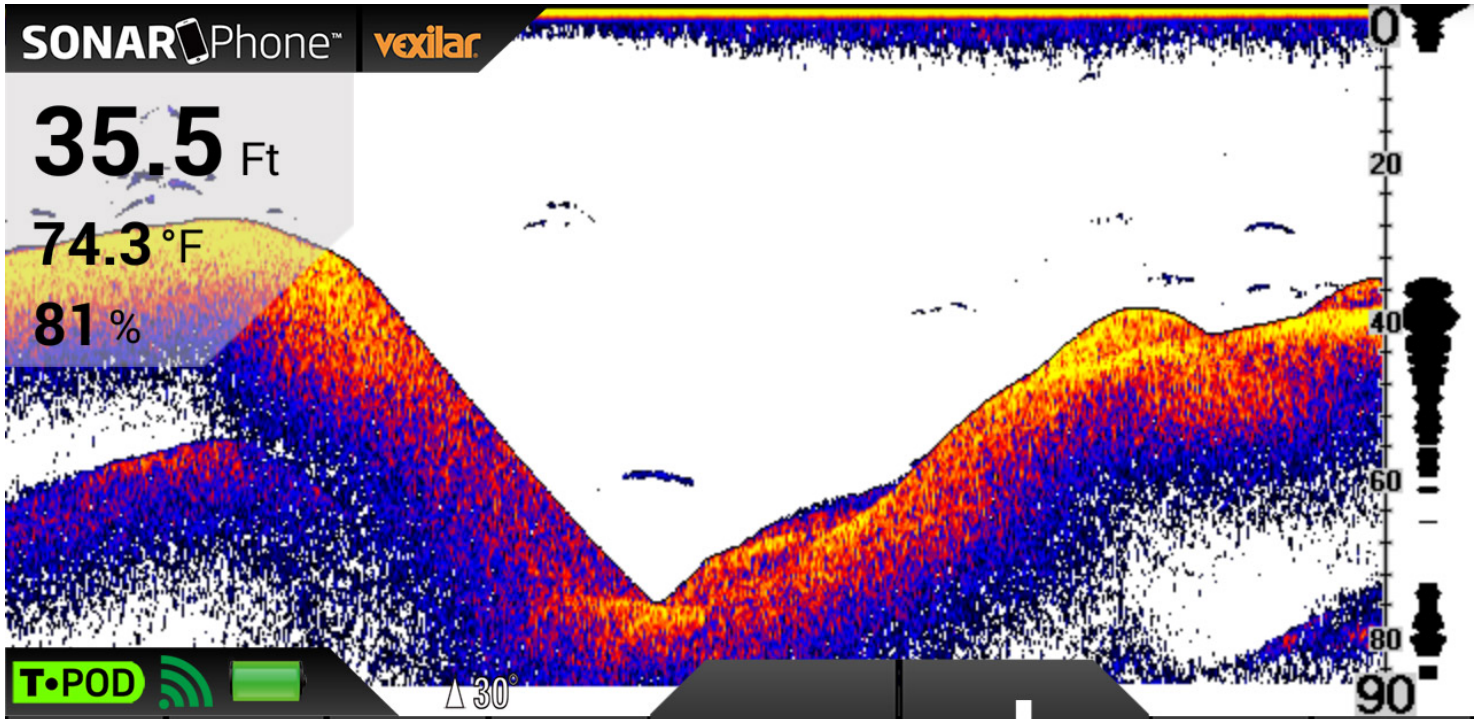
When ON the bottom signal stays locked on bottom as you move. SonarPhone automatically adjust to keep the bottom locked into a single position. This is useful when looking for targets close to the bottom when there are heavy waves on the surface.

Keel Offset

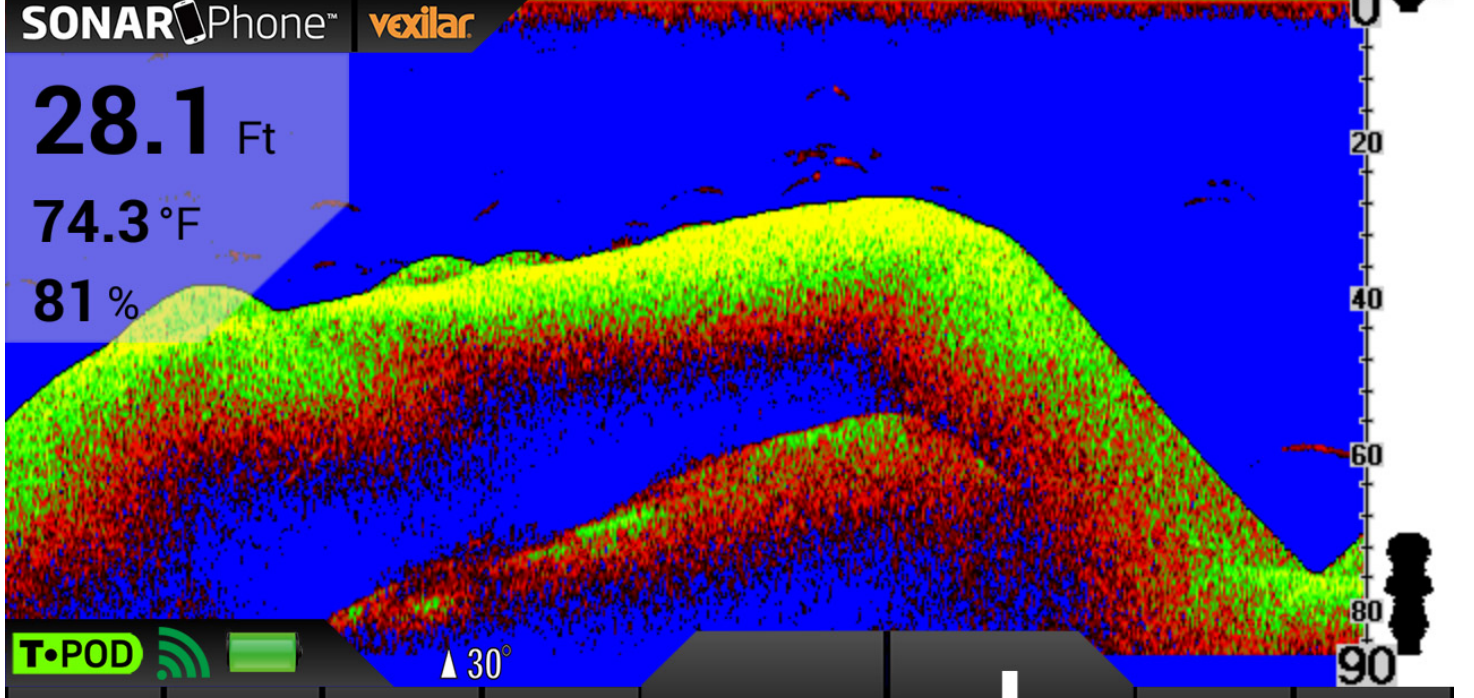
Keel Offset will adjust the digital depth readout to indicate depth from the waterline or boat's keel instead of from the transducer position. Enter a positive vertical measurement from the transducer to the waterline. Enter a negative vertical measurement from the transducer to keel to read the depth from the keel.

Display Color Options

Select the color scheme that works best for you: White Background, Blue Background or Gray Scale.



ESC ↶ ? ☰ - GAIN + 🔍 ▶



ESC ↶ ? ☰ - GAIN + 🔍 ▶



Surface Clarity

- Menu Settings: Off, High, Medium, Low

Surface Clarity adjusts the filter that removes surface clutter noise caused by algae and aeration. The lower the setting, the more surface clutter will be displayed. Increasing surface clutter reduces SonarPhone's ability to display small targets.

Noise Filter

- Menu Settings: Off, High, Medium, Low

The Noise Filter system built into SonarPhone constantly evaluates the effects of boat speed, water conditions and interference on the clarity of your display. This automatic feature gives you the best display possible under most conditions. If you have high noise levels, try using the "High" setting.

IMPORTANT: If you are having trouble with noise (electronic interference), we suggest that you take steps to find the interference source and correct it, rather than continually using the unit with the high setting.

Language

Select the language you can understand best: English, Spanish, German, Polish, Korean, Japanese, Chinese, Portuguese, Dutch, Finnish, Russian, Italian, Czech, Danish, French, Swedish or Greek.

Sonar Transducer Installation and Application

Before you can use SonarPhone in the water, you must understand how the sonar part of the system works (SP100 or SP200/SP300) so you can use it properly.

SP100 WiFi Sonar System



Using the SP100 WiFi Sonar System is simple. Just attach the SP100 to the end of a heavy fishing line and cast it into the water as you would a normal float or lure. You can also read the depth and see fish targets while you slowly reel in the SP100 or troll it behind your boat.



IMPORTANT: Ensure that the fishing line is heavy enough and the SP100 is well secured. Slip line techniques are not recommended because of the higher risk of losing the SP100. Also, be aware of power lines and other obstacles as you cast.

Handle the SP100 Wireless Sonar Sensor only by the top antenna cover or nose ring when it is ON. Avoid touching the bottom when active. Take extra care not to drop the SP100 while handling. Do not try to open your SP100, it is permanently sealed.

Charging the SP100



Before you first use the SP100 WiFi Sonar System you will need to charge it.

1. Align the plug of the charging cable with the pins on the bottom of the SP100 as in the following picture.
2. Align the USB plug of the charge cable (the longer of the two cables) with the USB socket of the power supply device (computer, adapter, etc.)
3. When charging starts the red lights inside the unit will remain On. When the battery is full, the indicator lights will be switch to green.

IMPORTANT: Be sure all of the connections are DRY, water on the stainless steel connection can create rust.

Turning SP100 ON



The SP100 WiFi Sonar System will active automatically when it is immersed in the water. The SP100's internal GREEN indicator light when it has connected a SonarPhone app successfully. Once immersed, the internal computer will begin to start up. Give it a few seconds.

When ready, the SP100 will begin to blink, indicating it is transmitting the sonar information via radio frequency (WiFi) for the SonarPhone app to receive. Connect to it's WiFi signal using your device settings, then return to the SonarPhone app to connect to the SP100.

You can turn your SP100 on at home and test it's functionality:

1. Dampen a paper towel with cool water.
2. Bunch it up and place it against the pins on the underside of SP100.
3. Watch as the light turns on and then begins to flicker.
4. Connect to the SP100 with your SonarPhone App. Refer to the [WiFi connection instructions](#) if needed. Make sure the GAIN is at least 70%. (You can remove the wet towel)
5. Hold the SP100 about 1 meter above a hard flat floor (not carpet).
6. Point the flat part of the bottom of the SP100 at the floor and watch for the echo to appear on your SonarPhone chart. The more perfect your aim at the floor, the stronger the echo will appear. Increase the gain level if you cannot find a floor echo.
7. The SP100 will time-out and turn itself off 30 seconds after the pins have dried.

IMPORTANT: The SP100's "Wet Switch" pins must be rinsed with fresh water after exposure to salt water to prevent corrosion.

IMPORTANT: Do not place the SP100 in a wet area or on a metal surface when not in use as this will activate the SP100, drain it's battery and help shorten its usable life. Store the SP100 in a dry area.

Resetting Your SP100 To Factory Default

A. The T-pod must be OFF and FULLY CHARGED before resetting.

B. Using the shorter (reset) lead on power charging cable you need to connect to power then connected to your SP100 for at least 10 seconds.

C. Remove the lead from the T-pod, DO NOT CONNECT THE DEVICE (SMARTPHONE) TO THE SP100 immediately. Allow the T-pod turn off automatically in one minute.

Master Passcode: 12345678

If the device does not accept the factory default passcode please re-peat steps A, B & C (It may take several attempts in some cases.) Don't forget to re-establish yourself or device as the Master before you enter the SonarPhone app.

SP100 No Hassle Service Program

Fishing can be hard on equipment, so if you damage your SP100 (and this is NOT covered by your warranty) you can have it replaced for a fraction of the original cost. This service also extends beyond the standard warranty period, so if five years from now the battery is fails, Vexilar's No Hassle Service Program for SonarPhone SP100 owners will be there for you, for as long as you own the product!

Here's how it works: Send us your damaged or destroyed SonarPhone SP100 along with \$60.00 US and we will send you back a replacement SP100! No questions asked. This cost includes domestic return shipping. Some additional shipping may apply for customers outside the USA. Credit card payment is also accepted by phone. (Visa and Master Card only)

Send to:

Vexilar, Inc.

6667 West Old Shakopee Rd Suite #101

Bloomington, MN 55438 – USA

Attn: SonarPhone No Hassle Service

IMPORTANT: Be sure to include your name and return address and a phone number or e-mail address for us to contact you.

IMPORTANT: Do not try to open your SP100, it is permanently sealed. Opening a SP100 will void the warranty.

SP200 WiFi Permanent Installation



To use the SP200 system on a boat, the T-Box and transducer must first be installed onto the boat and the proper wiring connection made.

Take a few minutes to plan your installation. The SP200/SP300 should be mounted in a location where it will be readily accessible yet out of the way of traffic and sheltered from severe weather exposure. The mounting surface should be fairly flat. Be sure to allow clearance for the cables. The unit is weather-proof, not waterproof, so try not to mount it in a location where it will be submerged or exposed to the extreme forces of wave impact during severe conditions.

Mounting the SP200



1. Obtain four appropriate fasteners for your mounting location.
2. Position the SP200 in your intended mounting location.
3. Mark the four holes and drill each using the appropriate drill size.
4. Attach the SP200/SP300 using your four fasteners. Tighten securely.
5. Insert the power cable jack and tighten the transducer cable connection securely. Ensure there is good clearance for the connectors.

SP200 Power Connection

SP200 requires a 12 volt power source to operate. A connection can be made directly to a battery or a connection can be tapped into a boat's electrical system.

If possible, power your SP200 using the main starting battery, not a battery that powers an electric trolling motor or other potential source of electrical interference.

When routing the cable, be sure to stay away from, or provide cable protection around, areas with sharp metal edges. If the supplied power cord is too short, extend it using 18 gauge wire.

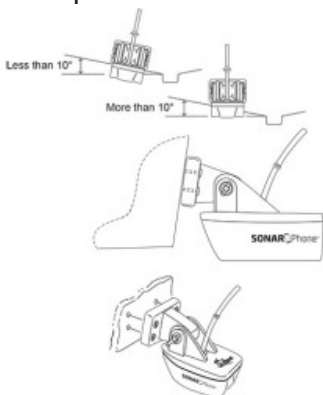
IMPORTANT: Be sure to have circuit protection, such as a 1 amp fuse or circuit breaker, placed in the positive line near the power source to protect the wiring.

Connect the SP200 to Power

1. Be sure the power cord is not connected to the SP200.
2. Route the power cable from the SP200 location to the power source.
3. Connect the red wire to the positive power source terminal and the black wire to the negative terminal.
4. Connect the power plug to the SP200's power jack.

Transducer Installation

The sonar transducer style that comes with SP200 is designed to be mounted externally on the transom of your boat, or in-hull for fiberglass boats (see section below). It has a special wedged shape to allow clear water flow when running at high boat speed. The transducer is attached at the bottom of the boat's transom with a small portion of it extending below the hull line.



Before you begin the process of installing the transducer, check your hull to find a spot where you will have a smooth water flow along the bottom of the boat. You want to avoid ribs, rivets, and gouges or scratches in the

hull. These create turbulence in the water and can scatter SonarPhone readings at high speeds. To get a true vertical depth reading, the transducer should be mounted parallel to the water line. However, a 10° tilt to either side is acceptable. If the hull is reasonably flat with a dead rise of 10° or less, mount the transducer along the hull bottom. If dead rise is greater than 10°, mount the transducer with level alignment.

Install the SP200 Transducer Externally

1. Assemble the plastic bracket to the transducer using the hardware furnished. Do not tighten until final adjustments are made.
2. Place assembly on transom at selected location with the front of the transducer extending 1/2" to 5/8" below the bottom of the boat and with the front part against the transom. The least amount that the transducer extends below the bottom is desired. If too low, spray and turbulence will occur resulting in lost bottom readings.
3. With transducer in place, mark the two slot locations of the transducer mounting brackets. Drill in center of slot outline using a 1/8" (.125") drill.
4. Fasten the transducer to the transom using the #8 x 1/2" screws, nuts and washer plates.
5. Before final tightening the 2 screws holding the brackets to the transducer, tip the rear edge down approximately 1/8" as shown.
6. Tighten all screws.

CAUTION. Do not use any thread locking compound on the screws. Most products such as Loctite® contain chemicals that attack and weaken plastics.

Install the SP200 In-Hull



Finding the best location for the transducer before you mount it is critical. Choose a flat smooth spot near the center of the bilge and near the back of the boat. It is a good idea to make a "test run" before you permanently install the transducer to make sure that you can indeed get a reading through your hull and when the boat is on plane. Put about a half inch of water in the bilge and hold the transducer in the intended location using a small bag of sand. Move the transducer around until you get the best reading. Mark that spot.

To install the transducer clean the spot of mud and oil. Using an epoxy or silicone glue, make a puddle about the same diameter as the transducer's face on the hull. Place the transducer in the glue. Press it down firmly, gently twisting it back and forth, making sure that there are no air bubbles in the glue between the transducer and the hull. **Let the glue dry completely before turning the unit on.**

Turning the SP200 On

press the master ON/OFF switch for about 2 seconds to turn the T-box on.

(Note: random flashing of the power light is normal and indicating it is transmitting a WiFi signal)

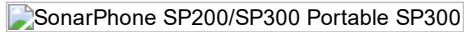
To Turn it off, Press the master ON/OFF switch for about 5 seconds to turn the T-box off.

Resetting the SP200

When the system is ON, press the ON/OFF switch three times, quickly within 3 seconds. The system will power OFF if the reset was successful. Turn it on again. Now the name and password will be back to factory default: **12345678**.

* **Quick Touch Models:** Note: Some models of SP200 may have an “instant on” button to turn your system. You still need to hold down the button 5 seconds to turn off your SP200 and models with the instant on power button will not power down automatically when not used, so be sure to turn off your SP200 when you are done fishing.

SP200/SP300 WiFi Portable WiFi Sonar System (SP300)

SonarPhone SP200/SP300 Portable SP300

The SonarPhone SP300 Portable System includes a convenient carrying case system in which the SP300 is mounted to. It contains a rechargeable 12 Volt battery and a suction cup style transducer mounting system. This allows you to use SonarPhone on a boat, without the need for the installation steps. A suction cup attaches the transducer to the boat.

Attaching the Suction Cup Transducer

1. Unwind the cable from the carrying case and set the transducer system near the back of the boat.
2. Find a smooth spot on the outside and near the bottom of the transom. Try to find a place where the water flow will be smooth when the boat is going fast. You want to avoid ribs, rivets, and gouges or scratches in the hull. These create turbulence in the water and can scatter SonarPhone readings at high speeds.
3. Wet the face of the suction cup slightly, then press it firmly against the transom of the boat. Slide it into the best position you can see.
4. Pull on the suction cup to ensure that it is holding securely, then route the transducer cable up to the carrying case. Restrain the cable so that it does not become tangled in the propeller or the motor workings.

IMPORTANT: Suction cups can come loose. Be sure to take the time to tie a rope to the transducer bracket and then to the boat leaving as little amount of slack as you can. If the cup comes lose, this will keep your transducer and cable out of the propeller.

Turning the SP300 On

press the master ON/OFF switch for about 2 seconds to turn the T-box on.

(Note: random flashing of the power light is normal and indicating it is transmitting a WiFi signal)

Charging the Battery

Allow the battery to warm up before charging. This makes it easier for the charger to charge the battery and the battery is more accepting of a charge.

1. Plug the charger into a wall outlet, verify that it is operating by noting the illuminated GREEN light.
2. Connect the charger to the Easy Charge Jack on the SP300. The charger's light will switch to RED, indicating that it is connected correctly and the battery is charging.
3. Keep the charger plugged in and connected until the RED light has changed to GREEN. This indicates the battery is at full charge.
4. Unplug the charger from the wall outlet and disconnect from the battery.

Charging times will vary depending on how much the battery has been drained. If the battery has been completely drained the battery will require about 4 hours of charging. Once the battery is fully charged and the charger's light returns to GREEN, the charger is then operating in a “Maintenance Mode”. At this stage, the charger can remain connected to the battery indefinitely and the battery will be maintained at full charge.

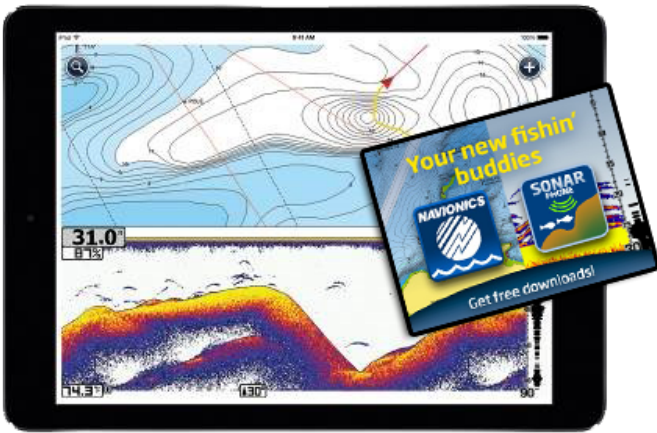
Where to Buy

Vexilar has a wide network of sporting goods dealers. For a complete list and nearest location finder, please visit <http://vexilar.com/apps>

Where to Get Help

If you have problems or questions, please visit our support website: <http://vexilar.com/apps/support>

SonarPhone & Navionics



Navionics Boating Apps for Android version 4.3, includes the powerful SonarPhone feature enabling you to view a fishfinder split screen with Navionics charts.

Now display live sonar and Navionics charts from your kayak, runabout, or any size boat with SonarPhone. Focus on underwater action relative to your chart details to identify fish-holding structure and patterns to zone in on. You'll just need to purchase and install the SonarPhone SP200/SP300 equipment.

The SonarPhone SP200/SP300 is affordable and available to buy directly from within the app at Menu > Charts & Upgrades or from this link <http://www.sonarphone.mobi/Navionics>. It includes a transducer and Wi-Fi transmitter that can easily be installed on any vessel. Then simply connect wirelessly with SP200/SP300 and the app automatically displays the live data. Boaters who are looking for a handy and inexpensive supplement to their current onboard systems also benefit from wireless access anywhere on the boat. Depth data obtained every time you connect with SonarPhone allows Navionics to enhance SonarCharts(tm) anywhere you go, including creeks, rivers and inlets.

The SonarPhone SP200 and SP300 systems with Navionics is a great option for many boaters and anglers, but it is critical to note that the SonarPhone app DOES NOT contain the Navionics charting feature. It is the Navionics app that contains SonarPhone. Boaters and anglers who are looking for a handy and inexpensive supplement to their current onboard systems also benefit from wireless access anywhere on the boat. Depth data obtained every time you connect with SonarPhone allows Navionics to enhance SonarCharts&trad; anywhere you go, including creeks, rivers and inlets.

Go to www.navionics.com to learn more.

FCC Warning Statement

Changes or modifications not expressly approved by the party responsible for compliance could void the user's authority to operate the equipment.

This equipment has been tested and found to comply with the limits for a Class B digital device, pursuant to Part 15 of the FCC Rules. These limits are designed to provide reasonable protection against harmful interference in a residential installation. This equipment generates uses and can radiate radio frequency energy and, if not installed and used in accordance with the instructions, may cause harmful interference to radio communications. However, there is no guarantee that interference will not occur in a particular installation. If this equipment does cause harmful interference to radio or television reception, which can be determined by turning the equipment off and on, the user is encouraged to try to correct the interference by one or more of the following measures:

- Reorient or relocate the receiving antenna.
- Increase the separation between the equipment and receiver.
- Connect the equipment into an outlet on a circuit different from that to which the receiver is connected.
- Consult the dealer or an experienced radio/TV technician for help.

FCC Radiation Exposure Statement

The antennas used for this transmitter must be installed to provide a separation distance of at least 20 cm from all persons and must be co-located for operating in conjunction with any other antenna or transmitter.

*Software Engineering by [Phiradar Technology Co., LTD](#)